



Naturally LOUISA COUNTY

Rich in Nature, History and Culture

SUMMER 2023
VOLUME 16
ISSUE 2

IN THIS ISSUE

- 2 *Bowfin Fish*
- 3 *Reptiles & Amphibians*
- 5 *Field Trips, projects, & Burning*
- 6 *Upcoming Events*
- 8 *Area Spotlight: Baird Timber*
- 10 *Scholarship Winners*

INDEX OF CONTRIBUTORS

- 2 *Iowa DNR*
- 3 *US Fish and Wildlife Service*
- 4 *Louisa County Conservation*
- 8 *Naturally Louisa County*
- 9 *Soil and Water Conservation District*
- 10 *Tri-Rivers Conservation Foundation*

EDITED BY
Katie Hammond

The Search for a Cemetery

By: *Katie Hammond, Director*

Louisa County Conservation purchased the Mabeus Addition to Virginia Grove Recreation Area last fiscal year. It is a 51.43-acre parcel that played a key role in connecting the main Virginia Grove Park to Baird Grove and the previously landlocked Heatherington Unit. The result is 157-acres of continuous land, open to the public for camping, hunting, fishing, hiking, birding, and exploring.

During negotiations for the sale, we were made aware that there is a pioneer cemetery somewhere on the site. The family did not know the exact area, since they were young when the stones were misplaced.

To give you a little backstory, at one time the land was a woodland, covered in trees. The area was harvested for lumber sometime in the late 50's to make Oak barrel staves. It was later bulldozed so that crops could be planted on the land. We believe that somewhere during the process of clearing the land of trees, the stones were inadvertently shifted. Once it was realized, they were placed in the nearby fencerow, unsure of their former location. Over time, the stones disappeared and we have been unable to locate them.

The legal description for the cemetery goes something like this: "commencing at a stake at the NW corner 6 feet SW of a white oak tree notched at the root, thence south seven rods..." It goes on to talk about the "south half of the SW1/4 of Section 4, township 73 North, Range 4 West and containing 42 rods near the NW corner of the above described land."

Louisa County Conservation would really like to find the location of the cemetery so that

we are able to properly mark the site and avoid it during future plans that could include food plots, a second pond, or other developments.

The Virginia Grove (Jarvis) Cemetery holds the burial of 7 members of the Zadock and Jane Jarvis Family. Together they gave birth to 5 children.

Records show that the first person buried was Sarah Jarvis, a 10 month old daughter, who died on March 3, 1842. James Jarvis, her brother, died on May 20, 1843 at just 3 months old. The mother, Jane Jarvis, passed away on February 6, 1844 at 25 years old. After Jane's passing, Zadock remarried and had another 6 children with Charlotte Spafford. Little information is known on the ages or relation of the other 4 burials, and only 1 has a name, Cedric Jarvis.

Zadock Jarvis was considered "old age" when he passed at 77 years old. His obituary describes him as, "A remarkable man...endowed by nature with superior judgement and considerable talent." After his passing, there were few pioneers left who "could tell the story of the trials and hardships of the early days of pioneer life in Louisa County."

It is our hope, that in reading this you will reach out to your elders and ask if they know anything about the "old Jarvis Cemetery" or Virginia Grove Cemetery in Section 4. If you have stories or information we would LOVE to hear from you call 319-523-8381 or conservation@louisacountyia.gov.

Thanks for your help!

www.LouisaCountyConservation.org

The Bowfin

By: Vance Polton, Fisheries Management Technician

One of the most maligned fish in our waters is the Bowfin *Amia Calva*. Also known as the dogfish, this fish is a true survivor and has basically remained unchanged from its origins back 180 million years ago.

Capable of breathing air by using its air bladder as a primitive lung the bowfin is perfectly designed to live in its natural habitat, the backwaters and marshes along the Mississippi River along with the lower reaches of the Iowa and Cedar Rivers. As these waters dry up during the summer months and get hotter and hold less

oxygen, forcing other fish to perish or flee these waters, the bowfin stays and will surface frequently to breath in air to fill its air bladder and absorb oxygen that way.

Hot stagnant waters are also of little threat to the bowfin that can take water temperatures into the mid-nineties before dying, most panfish like crappies die when the water hits 88-90 degrees. If the backwater dries up whereas most trapped fish would die, the bowfin sees no problem and will burrow down into the bottom mud and hibernate for up to fourteen months until the backwater refills and they can dig themselves out of the mud and continue on with their lives.

Adapted to living in muddy backwaters, the bowfin has also developed extremely bright colors during the breeding season with bright (neon) green lower fins and tail and in the males a large dark spot with a bright yellow of orange halo on the upper part of the tail making it very easy for the females to find the nest making males. The males also sport a neon green inside of their mouth. This comes in handy as the male takes care of the young until they are around four inches long (they grow to about eight inches long their first year of life).

If the males sense danger that he knows he cannot

fend off he will open his mouth wide showing that bright green which serves as a signal for the little ones to swim into his mouth and he simply swims away. The top speed of a bowfin is 37 miles per hour. In comparison a largemouth bass's top speed is 12 mph and a northern pike can reach 20 mph.



Bowfin fish, *Amia Calva*

If you have ever hooked into a bowfin while fishing for crappie or bass, you soon learn how hard of a fighter this fish is. They don't give up easy and will make several long runs at top speed. If you do get them back to the boat, the fight's not over. Their jaws are extremely strong and you have little hope in getting your lure back in any condition to be used again. At first glance it might look like they have no teeth but that's because their teeth are

retractable into their gums. Trust me, I've been bit a couple of times over the years, they have a mouth full of sharp needle like teeth and their strong jaws are like getting your finger stuck in a pair of vice-grips, they just don't let go.

Bowfin really aren't much in the way of table fair and I only know of a couple of people that have even tried to eat one, although I do know of a few recipes that were developed for them. I have never tried eating one myself and always release them back into the water.

Anything that tough and has survived as a species for that long really does deserve our respect.

IOWA DEPARTMENT OF NATURAL RESOURCES

Conservation Officer - 563-260-1225
Joseph.Fourdyce@dnr.iowa.gov

District Forester - 319-523-2216
Lisa.Louck@dnr.iowa.gov

Fisheries Biologist - 319-694-2430
Chad.Dolan@dnr.iowa.gov

Wildlife Biologist - 319-551-8459
Andy.Robbins@dnr.iowa.gov



www.iowadnr.gov

Incredible Herps of Louisa County!

By: Nate Barnett, Wildlife Biologist

Louisa County features a variety of ecosystems that provide habitat for popular wildlife including waterfowl, upland game birds, game fish, and big Iowa whitetails. Often overlooked, most of our native wildlife benefiting from land protections and management are nongame species.

One of the strengths we have in our corner of Iowa is our amphibian and reptile diversity. Due to climate and geographical factors, southeast Iowa carries most of the amphibian and reptile, also known as “herptile” or “herp,” species in the Hawkeye state. Louisa County itself is home to over 50 species of amphibians and reptiles.

Among our county’s native herps are three species of map turtles, watersnakes, kingsnakes, and leopard frogs. There are two species of hognose snakes, ratsnakes, toads, garter snakes, softshell turtles, and mole salamanders; each filling specific niches in our ecosystems. Between our sand prairies, upland forests, bottomland forests, bottomland prairies, wetlands, and rivers, there are more species that deserve to be highlighted than we have space to write about. Here are a few great representatives of the herpetofauna that call our area home.

Our most cryptic species of amphibian is the



Smallmouth Salamander

Smallmouth Salamander (*Ambystoma texanum*). A “cryptic” species is one whose habits and life history make it inherently secretive and hard to find. This salamander spends most of its life underground in wetlands foraging on worms and other invertebrates.

During spring rains they migrate to temporary pools of water to breed. Aside from their breeding pools, these slick amphibians can also be found under rotting logs laying just above the water table in all of our county’s wetland areas.

The least common of our three species of watersnake is the Copperbelly Watersnake (*Nerodia erythrogaster*). Similar in appearance, the Copperbelly can be distinguished by its orange, patternless belly.



Copperbelly Watersnake

This watersnake prefers to overwinter near their wetlands, but safely above the water table. This limits them to specific habitats along the Mississippi River in Louisa County.

The more common of our two softshell turtles is the Spiny Softshell (*Apalone spinifera*). Easily recognized by their flat, smooth, fleshy shell, they are often seen basking on open riverbanks and logs. As agile swimmers, these turtles are voracious predators and commonly end up becoming fishing bycatch. Spiny softshells can be found in any moving waterbodies from agricultural ditches to big rivers. They will also occupy adjacent oxbow lakes and river backwaters.



Softshell Turtle

Our sandy river levees and gravel roadbeds make perfect nesting areas for softshell turtles, and you may catch females laying their eggs in these areas during the month of June.

To learn more about these species or any of Iowa’s amphibians and reptiles, you can order *A Field Guide to the Amphibians and Reptiles of Iowa* by Jeffrey B. LeClere. If you wish to participate in citizen science by recording observations of amphibians and reptiles, you can create an account at HerpMapper.org and download the app. Contact Nate Barnett at nathan_barnett@fws.gov for more information.

PORT LOUISA NATIONAL WILDLIFE REFUGE



10728 Cty Rd X61,
Wapello, Iowa 52653
319-523-6982

Office Hours:
M-F, 7:30 - 4:00 PM
fws.gov/refuge/port_louisa
facebook.com/portlouisaNWR

Spring Flooding along the Mississippi

By Katie Hammond, LCC Director

This year's spring flooding along the Mississippi River has caused us to temporarily close several public areas. Although we are fortunate that the Cedar and Iowa are not flooding, the Mississippi reached MAJOR flood stage with near record crests.

Louisa County Conservation had to close Flaming Prairie, it is expected to remain closed for a while because the flooding there is aquifer water, pushed up through the ground and seepage through the levee. Water drains from this area very slowly. I doubt it will be open before the holiday weekend. The Mississippi River gage at Muscatine will need to get down to 10-foot or lower, before the roads dry out enough for staff to get it cleaned up for camping and river access.

Snively Campground has also been closed. Mississippi floodwaters overtopped the four spillways and drastically raised the water level at Odessa over the weekend of April 30th. We anticipate the closure at Snively to be much shorter than Flaming Prairie. Thanks to a FEMA Grant, the majority of the camp pedestals at Snively are removable and staff was able to move picnic tables and remove pedestals prior to the high water. It won't take long to put them all back on once the water recedes and flood debris can be removed. Fingers crossed, we are hoping the area can be cleaned up and ready for Memorial Day camping!

The US Fish & Wildlife Service also had to close the road to Port Louisa Boat Landing and the Refuge and the gate at Big Timber due to water over the landings and roads.

The Iowa DNR closed the road leading to



Toolesboro Access as well. Water overtopped the road and the spillway making travel dangerous.

As the old saying goes, "Turn around, don't drown!" Please be safe.

Thank You Donors and Volunteers!

An extra special Thank You goes to ALL of the volunteers who helped with Spring field trips. A HUGE thanks to our cooperative burn crew also! We couldn't do it without ALL of you!

Adam Rudisill	Jacklyn Goodman
Andrew Rompot	Jake Shoppa
Andy Robbins	Jason Taylor
Ben McCleary	Jennifer Massey
Bur Oak Land Trust	Jerry Heater
Carter Johnson	Joe Fourdyce
Claire Hamilton	Joe Frieden
Cooper Gutters	Kamdyn Hammond
Dale Maxson	Karen Wilke
Don Becker	Kathy Larsen
Elizabeth Kling	Kelly McKay
Elizabeth Owens	Kiara Hirst
Erin Hosto	Matt Fry
Gemma Tursi	Mitchell Griffin
Gennifer Shoppa	Ron Knopik
Iowa DNR	Sarah Marston
Iowa River Tree Service	The Nature Conservancy
Jace Kauffman	Travis Russell
	William Blair

LOUISA COUNTY CONSERVATION



12635 County Road G56, Suite 101
Wapello, IA 52653

319-523-8381; Conservation@louisacountyia.gov

LouisaCountyConservation.org

LCC STAFF

Katie Hammond
Lana Artz-McComb
Dani Boysen
Noah Robb
Jacob Ewart
Sarah Martinez

BOARD MEMBERS

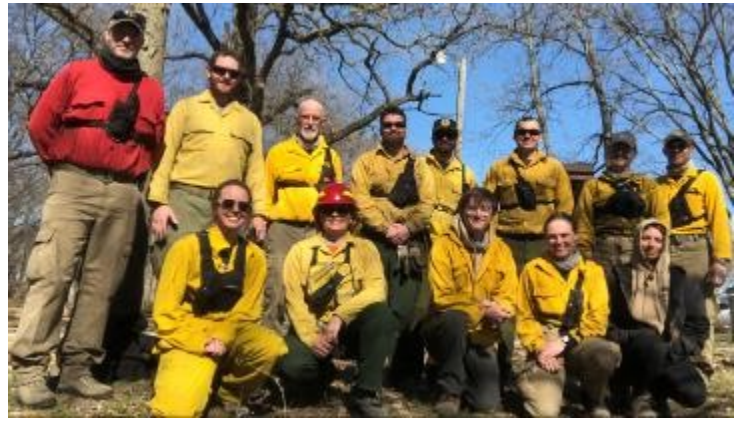
Elizabeth Kling
vacant
Joellen Schantz
Brad Quigley
Josh Hardin

Cooperative Burning in Louisa County

Right is a cooperative burn crew of folks from Louisa County Conservation, The Nature Conservancy, and Bur Oak Land Trust who burned the 51-acre Mabeus Addition at Virginia Grove.

Service Projects

Below: Students from Louisa-Muscatine Cons. & Carpentry II class are building an accessible hunting blind that will be placed at Chinkapin Bluffs. Money for the blind was donated by the Devore Family.



Accessible Hunting Blind
Donated by:
The Devore Family
Labor provided by:
**2023 Louisa-Muscatine High School
Construction & Carpentry II**
Jesse Register, Mark Kloser, Tucker Janecek, Richard Backes
Nathan Bartenhagen, Isaiah Boonstra, Talin Brewer
Hunter Dieckman, Maggie Gomez, Nickalus Heuer
Cameron Ibbotson, Colton Kennedy-Laymon, Cody McKim
Autumn Peterson, Manuel Robles, Allen Stauffer



Environmental Education in Louisa County

Did you know that our naturalists educate pretty much every single kid in Louisa County from preschool through 6th grade at least once a year? Environmental education is a HUGE part of what we do. Several students and school groups have been attending field trips this spring to various parks and wildlife areas.

Left: Morning Sun 3rd grade students learn about animal tracks during their day into night field trip at Langwood.

Below: Students get the opportunity to learn about and view wildlife up close. A snake at Big Sand Mound smells the 4th graders during a recent field trip.



**Save the trees,
enroll in eStatements today!**
Call us today to learn more.



Invested in You.
Washington State Bank



Columbus Junction
134 Main Street
319-728-2436
www.washsb.com



LOUISA COUNTY CONSERVATION EVENTS

Mother's Day on the Marsh

Sunday, May 14; 9:00 am - 11:30 am
Port Louisa Inlet Tubes

\$10 canoe, \$5 kayak, \$2 bring your own boat

Prepare to see birds and other mothers during this leisurely paddle.

Pre-registration required by Friday, May 12.

Canoe Loan at Snively

May 26, 27, & 28; 8:00 am - 7:00 pm
Snively Access Campground

\$5 for up to 2-hours or \$10 for the day

Canoes and kayaks will be at Snively throughout the Memorial Day weekend to use on the Odessa Water Trail. Contact us to reserve a timeslot in advance or simply show up. Youth under 18 must be accompanied by an adult.

Langwood Adventure Day

Saturday, June 3; 8:00 am - Noon
Langwood Education Center

Find adventure fishing, paddling, pond scooping, shooting bows and arrows and more! This is your chance to climb to new heights at the Langwood Challenge Course. Children must be accompanied by an adult.

Registration is requested for this FREE event!

Big Sand Mound Field Day

Saturday, June 10; 8:00 am - 4:00 pm
Early-bird hike at 5:30 am

Big Sand Mound Nature Preserve
Cost: \$15/adults, kids free

The opportunity to explore Big Sand Mound only comes along every 3 years! Register online now for some excellent sessions including reptiles & amphibians, pollinators, fire ecology, archaeology, and more!!!

Pre-registration requested, walk-ins welcome.

Come see us at the Louisa County Fair

Booth: Tues, July 25 - Fri, July 28; 11am-4pm
Louisa County Fairgrounds

Special Conservation Events:

Thurs, July 27 - Live Animals - 10:30 am & 11:30 am
Support the Louisa County Fair! Stop at our booth to view displays and other fun activities.



Family Campout

Thurs., Aug. 10; 4:00 pm to Fri., Aug. 11; 9:00 am
Langwood Education Center
Cost: \$15/family

We will sleep in tents, cook dinner over a campfire and explore Langwood at night. Dinner, a bedtime snack and breakfast provided! Tents available to borrow.

Pre-registration required.

Hunter Education

Thursday, August 17; 6:00 pm - 9:00 pm
Saturday, August 19; 8:00 am - 4:00 pm
Langwood Education Center



This free class includes classroom lessons and field experiences. Students must be 11 years or older to attend.

Registration required through the Iowa DNR

website: license.gooutdoorsiowa.com.

Building Better Birders

Songbirds and Migratory Insects

Saturday, September 9; 7:00 am - 5:00 pm

Big Sand Mound Nature Preserve, Bayer Rec Building
Participants will get to learn about birds and insects. The day includes hikes & presentations. Guests are welcome to come for all or part of the day. View the full schedule at buildingbetterbirders.com.

Pre-registration requested for this FREE event.

Monarch Butterfly Tagging

Saturday, September 9; 3:00 pm - 5:00 pm

Louisa County Complex
Cost: Free

This is your chance to do some citizen science. Help us catch and tag monarch butterflies! Learn about these beautiful and beneficial pollinators and the long journey they make to Mexico. **Pre-registration not required.**

Save the Date for WOW!

September 22-23, 2023, Langwood Education Center

Unless otherwise stated, all registration and program information can be found at:

LouisaCountyConservation.org

Online reservations are available for most programs:

MyCountyParks.com/County/Louisa.aspx

Call our office: 319-523-8381

Send an email: conservation@louisacountyia.gov

Louisa County Summer Rec

Summer Rec is sponsored by each city and provided by Louisa County Conservation.

9:00 am - Noon daily; Cost: Free!

Permission/health forms are available online, at the local libraries and at Summer Rec. They will need to be filled out and signed by a parent/guardian and turned in the first day.

Columbus Community - Grades K - 6

July 3, 5 - 7: Chautauqua Park Shelter

July 10 - 14: Monkey Run Park

Grandview - Grades K - 6

June 12-14: Academy Park Shelter

Fredonia - Grades K-6

June 15-16: Concord Street Park

Morning Sun - Locust Grove Park

June 19-23: Grades K - 2

June 26-30: Grades 3 - 6

Wapello - Grades K - 6

July 17- 21: South End Park Shelter

July 31 - Aug. 4: North Park Shelter



2023 Summer Nature Camps

Nature Camps are full, except for 1 spot in Tadpole Camp. Those who have registered will be receiving a letter with more information and what to expect.

Full

Caterpillar Camp

June 12-16; 8:30 am-11:30 am
Entering K-1st Grade; Cost: \$40



Tadpole Camp

1 SPOT

June 26-30; 8:30 am-11:30 am
Entering 1st-2nd Grade, Cost: \$40

Full

Nature Detectives

July 10 - 14; 8:30 am-12:00 pm
Entering 2nd-3rd Grade, Cost: \$45

Full

Outdoor Explorers

July 31-Aug 2; 9:00 am-2:00 pm
Entering 3rd-4th Grade, Cost: \$50

Full

Great Escape

August 3-4; 9:00 am - 2:00 pm
Entering 4th-5th Grade; Cost: \$50



Full

River Paddlers Louisa County

July 5, 9:00 am - July 6, 4:00 pm
Entering 6th- 8th Grade. Cost: \$65

Full

River Raiders Upper Iowa River

Training day: June 7, 1:00 - 4:00 pm
Trip dates: July 18-20
Entering 8th- 12th Grade. Cost: \$90



Summer Library Programs

Cost: FREE!!

All Together Now is the theme of this year's Summer Library Programs.

We encourage all youth to take part in the summer reading programs and hope you will come on the following days to have even more fun with us!

Keck Memorial Library - Wapello

June 20; 2:00 pm - 3:00 pm

Columbus Junction Library

June 22; 10:00 am - 11:00 am

Mellinger Memorial Library - Morning Sun

July 10; 2:00 pm - 3:00 pm

Letts Public Library - Letts and Grandview

TBD - Follow Letts Public Library on Facebook



Stay Connected with LCC

Baird Timber

By Katie Hammond, Director

Baird Timber is one of Louisa County Conservation's smaller wildlife areas at just over 18-acres in size. This woodland is located at 2851 "K" Avenue, Wapello.

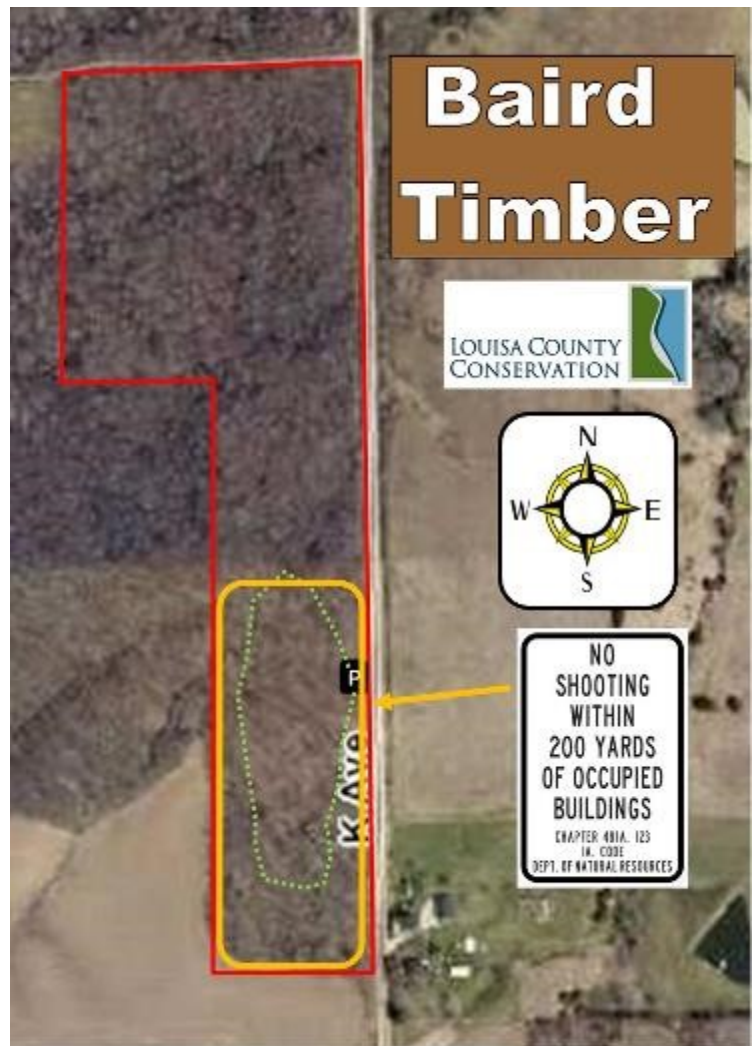
The only amenities at Baird Timber are a small parking lot and about a quarter-mile mowed trail loop. Although the area has quite a bit of topography, the trail is relatively flat and easy to walk. Hikers and hunters are allowed to hike off-trail which could include crossing a couple creeks and some steeper slopes.

Throughout the spring, this area is carpeted in beautiful spring ephemerals. The woodland wildflowers add splashes of color to the browns and greens of the forest floor. Colors include yellows, pinks, whites, purples, and blues.



Bellwort

Baird Timber is one of Louisa County Conservation's lesser visited areas. This makes it ideal for wildlife habitat and a nice place for a quiet walk. The woodland is beautiful in every season with signs of wildlife in every direction you look. Hunting is allowed on Northern part of the property, but not in the main trail area, due to the



fact that it is less than 200 yards from the neighbor's house. Hunters often seek deer, turkey, rabbits, and squirrel in the area.

Baird Timber is a quick leg stretch, and a beautiful timber for a walk. There are lots of signs of wildlife and always something fascinating to see!



Rue Anemone

Louisa County Transfer Station

Drop Off Recycling and Waste Disposal

Open Monday-Friday: 8 am - 4 pm

Open Saturday: 9 am - Noon

14048 70th St., Wapello, IA 52653

Questions? 319-523-5013



Household recycling – FREE

Tires, e-waste & appliance recycling – small fee

louisacountyia.gov

Facebook: Louisa County Transfer Station



MEDIAPOLIS SAVINGS BANK

Now Serving You In Wapello

306 N Second St.

Wapello, IA

319-523-2131



Visit any of our 4 locations in Mediapolis, Morning Sun and Wapello



www.GoMSB.bank



New Conservation Assistant

By Rachel Weiss, Conservation Assistant

Hello everyone! My name is Rachel Weiss and I am your new Conservation Assistant for Louisa County SWCD/NRCS.

Growing up I was always outside. Everything about the outdoors fascinated me. As I got older learning about plants and conservation is what interested me most.

After high school, I attended Western Illinois University where I earned a Bachelor's of Science degree in Agriculture Business with a minor in Natural Resources Conservation.

Previously, I worked for the Des Moines County FSA in 2016, and most recently worked for F&M Bank & Trust in Burlington before finding my way back into the agriculture and conservation field with becoming your CA!

Currently, I reside close to my parents and childhood home with my fiancé and our dog!

I spend my free time filling every nook and cranny of our yard and friends yards with native plants!



Betsy Evens Presented With an Award

During the recent Tri-Rivers RUSH Auction, Dan Vogeler presented Betsy Evens with an award in recognition of her valued service and guidance to the Louisa County SWCD from 2014 –2022.



Sub-District Soils Judging Contest

Each year in September the District sponsors the Southeast Iowa Soils Judging Contest.

In 2022, **approximately 93 students** arrived in Louisa County to judge soil pits to determine soil type, depth of topsoil and field slope. Students were scored on their results. In addition, students took a written test which figured into their overall score.

The top three students were **Kendal Pugh**, Louisa Muscatine, **Bryar Runnels**, Louisa Muscatine, and **Brianna Steele** from Fairfield. The top three teams were **Louisa Muscatine FFA Black**, **Fairfield 1** and **Louisa/Muscatine FFA Gold**. The top three students go on to the next level of competition.

This is a valuable learning experience for students interested in soils and conservation.

NATURAL RESOURCES CONSERVATION SERVICE SOIL & WATER CONSERVATION DISTRICT

260 Mulberry St., Suite 2
Wapello, Iowa 52653
319-527-8068



SWCD Commissioners:

Jonathon Ball	Kathy Dice
Dan Vogeler	Tim Knutson
Drew Yotter	

The Mission of the Louisa County Soil and Water Conservation District is to conserve, protect, and enhance our resources for current and future generations by providing information and assistance to farmers, landowners, operators and residents of Louisa County.



**Fire, Smoke & Water
Cleanup & Restoration**

24-HOUR EMERGENCY SERVICE
Wapello.....(319)527-2835
Toll Free.....(800)754-8050

TRI-RIVERS CONSERVATION FOUNDATION

Paris Scholarship Winner

Rylee Cole, a 2023 graduate of Louisa-Muscatine High School, is receiving the \$1,000 Paris Scholarship.

She plans to attend Muscatine Community College in the fall where she will major in conservation, then transfer to Iowa State University. Rylee is interested in becoming a Conservation Officer.

Watch for her this summer, she will be one of the Summer Rec interns for Louisa County Conservation!



Directors' Scholarship Winner

Bryar Runnells, a 2023 graduate of Louisa-Muscatine High School was chosen for this year's \$1,000 Directors' Scholarship.

Bryar is planning on attending William Penn University where he will play baseball and major in Biology with a Conservation emphasis.

His goal is to become either a Conservation Officer or a fisheries biologist.

Trident Explorer Raffle



Solo Boat for Hands-Free Fishing

1 ticket for \$10 or 3 for \$25

Drawing to be held June 3, 2023
at Langwood Adventure Day

Tri-Rivers will be selling raffle tickets from now until June 3 on this hands-free fishing boat.

There are several ways to get your tickets:

- Use the donation form (Page 11)
- Online at tri-rivers.org

We also plan to have the boat available for a test paddle at Mother's Day on the Marsh (May 14) & Langwood Adventure Day (June 3), where the drawing will take place.

Get your tickets and come take this hands-free fishing boat, the Trident Explorer, for a test paddle!



Extra Special Thanks: Terry & Mary

These two beautiful ladies worked so hard in the kitchen making and preparing the Hors d' Oeuvres for the RUSH Cocktail Party! The food was elegant, extravagant, and so delicious.

We are so thankful to have such great friends who go above and beyond.

Thank you Terry Johnson & Mary Delzell!

Thank You!

Thank you so much for your continued support! We couldn't do it without you!

Al & Dianne Bohling
 Amanda & Jay Heindel
 Beverly Paris & Family
 Bob & Paula Buckman
 Cindy & Mike Klebe
 Dan & Sue Vogeler
 Dani Boysen
 David & Carol Pierce
 Don Kline
 Drew DeLang
 Economart
 Evans Enterprises
 Gail Kuntz
 Harner Farms
 Hon
 Jay & Sue Schweitzer
 Jeff Weikert
 Jim & Jeanne Mott
 Jim Rudisill
 Joan Delzell-Bausch
 Kamdyn Hammond
 Karen & Larry Minnis
 Katie & Jeff Hammond
 Kevin & Teresa Schaper
 Louisa County Conservation
 Lynette & Brad Grimm
 Marcelene Bell



Tri-Rivers Conservation Foundation Directors. Back row (l-r): Jeanne Mott, Don Kline, Jay Schweitzer, Al Bohling, Dan Vogeler, Karen Minnis, and Steve Johnson. Front row: Lynette Grimm, Cindy Klebe, and Amanda Heindel.

Metal Marsh Art
 Mary Anne Kessler
 Mary Delzell
 Pierce Furniture
 Randy Gipple
 Ron & Marilyn Shepard
 S&J Tube
 Sam & Betty Ball
 Scott Heater
 Steve & Bev Nielsen
 Steve & Kathy Johnson
 Tammy Noble
 Terry Grim
 Terry Johnson
 Terry Wheeling
 Willy Wever
 Wyman Rustics



12635 County Road G56
 Suite 106
 Wapello, Iowa 52653
 319-523-8381
 tri-rivers@louisacountyia.gov
 Follow and Like us on Facebook
www.tri-rivers.org

MAKE A TAX-DEDUCTIBLE DONATION TO SUPPORT CONSERVATION EFFORTS IN LOUISA COUNTY

Enclosed is my donation for:

\$25 \$50 \$100 \$250 \$500
 \$1,000 Other _____ Raffle tickets 1/\$10 or 3/\$25

Name or Business _____

Address _____

City, State, Zip _____

Email _____

Return this form and payment to:

Tri-Rivers Conservation Foundation
 12635 County Road G56, Suite 106
 Wapello, IA 52653

Please earmark my donation for:

- Langwood Improvements
- Louisa County Trails Council
- TRCF Scholarship
- Environmental Education
- Use my donation where needed most
- Other: _____

General Donations are payable to:

Tri-Rivers Conservation Foundation

Endowment Funds are payable to:

- Community Foundation of Greater Muscatine* (for Iowa Tax Credit)
- Tri-Rivers Endowment Fund
- Trails Endowment Fund
- Paris Scholarship Endowment



12635 CTY Rd G56, SUITE 106
 WAPELLO, IA 52653
 WWW.TRI-RIVERS.ORG

NONPROFIT ORG
 US POSTAGE
 PAID
 WAPELLO IA
 PERMIT NO 23



“Of all the paths you take in life, make sure a few of them are dirt.”
 —John Muir

Camp Louisa County Conservation



Snively Access
 Virginia Grove Recreation Area
 Flaming Prairie

NEW this YEAR

- Snively & Virginia Grove - sites require online reservations. Do not set-up without a reservation.
- Flaming Prairie - will remain first-come, first served. Campers will self-register at the pay box.

Online Reservations Available NOW

Camping reservations are made online, anytime from a year in advance to when you pull into the campground.

www.mycountyparks.com/County/Louisa/Facility/Search.aspx

Snively Access



Use the QR codes to go directly to the website reservation page for where you want to camp!

Virginia Grove



Contact our office in advance for assistance.
 319-523-8381 conservation@louisacountyia.gov



Langwood Adventure Day

Saturday, June 3, 2023

8:00 am - Noon

Langwood Education Center

Have fun participating in all sorts of outdoor recreation activities.

- ☑ Canoe, kayak, fish, and scoop at the pond.
- ☑ Reach new heights on the Langwood High Ropes Challenge Course!
- ☑ Test your aim with archery and BB gun shooting.
- ☑ Explore nature, view birds, take a hike, and more!!

For more info or to pre-register for this **Free Family Event!!**

319-523-8381

LouisaCountyConservation.org



Naturally Louisa County is an innovative collaboration between government agencies, private organizations and individuals interested in showcasing the natural and cultural resources of Louisa County, Iowa.