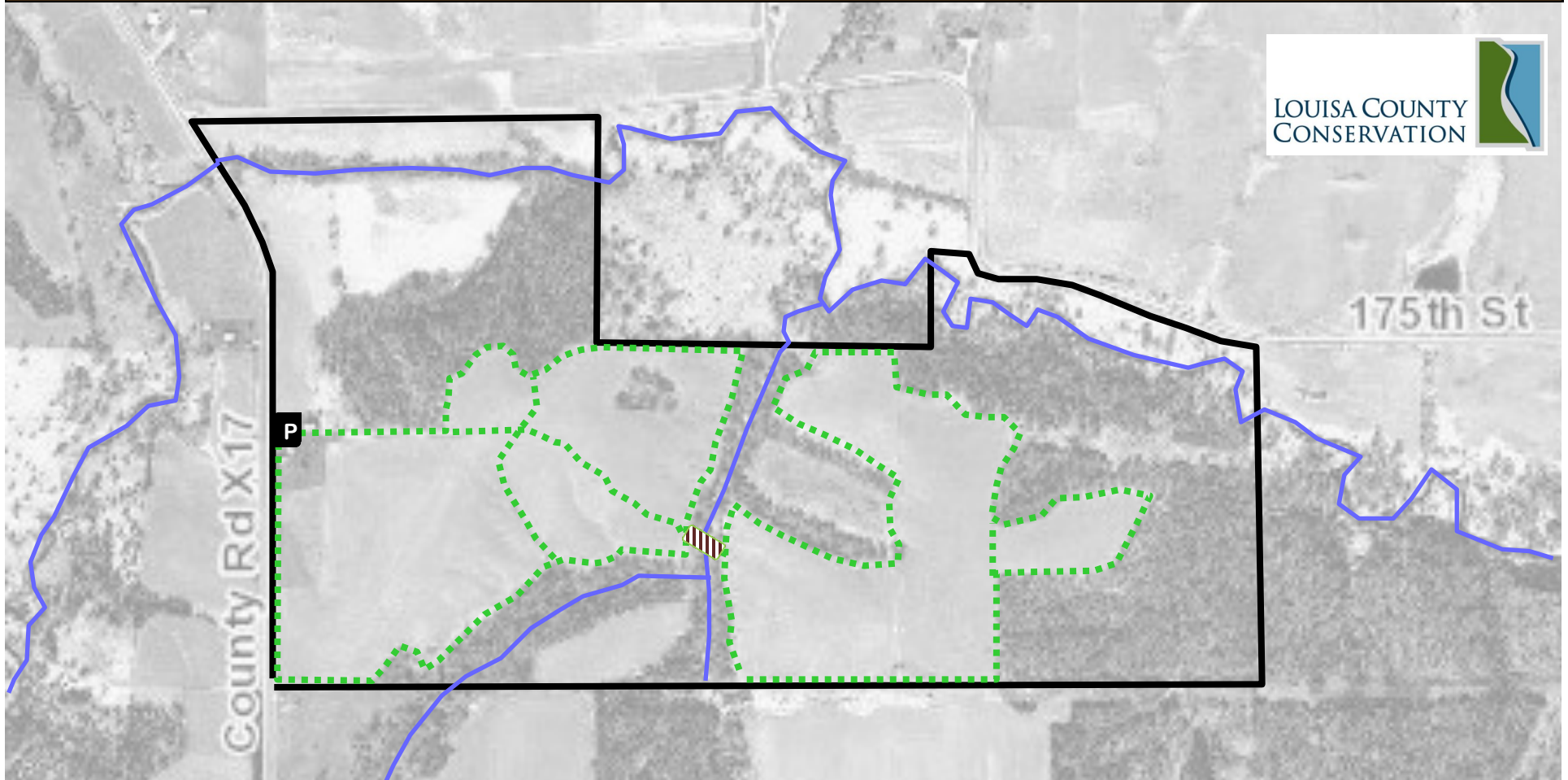


Eden Park



Eden Park - 146 Acres

17426 Co. Rd. X17, Columbus Junction, IA 52738

Habitat: Planted to a mix of cool and warm season grasses, woodlands, creeks and wetlands

Allowed uses: Hiking, birding, mushroom and berry picking, nature exploration





Contact: Louisa County Conservation 319-523-8381

conservation@louisacountyia.gov

LouisaCountyConservation.org

Hunting is NOT allowed.

Map Key

-  **Parking Lot**
-  **Green Trail**
-  **Low water crossing**
-  **Park Boundary**

